

Figure 30.1 SWSAHS Hospitals 2002/3 - Age Profile (Seps): HAEMATOLOGY *

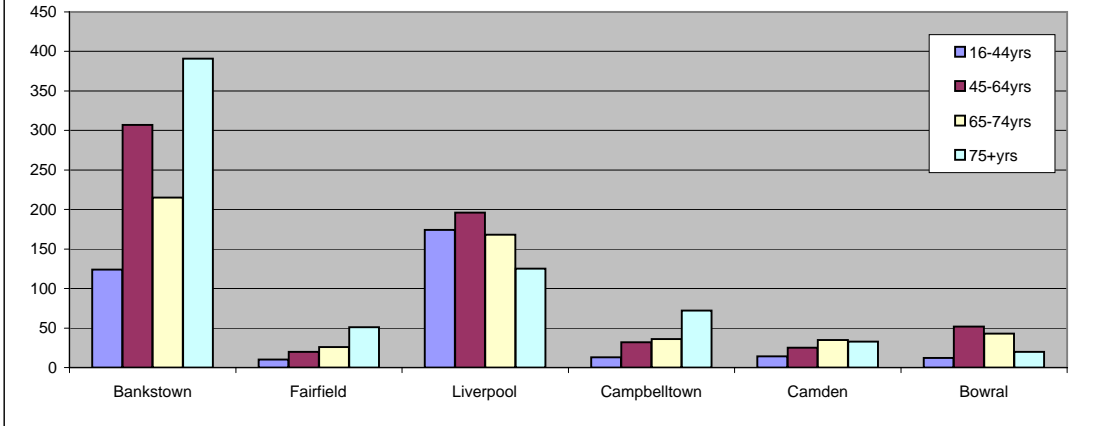
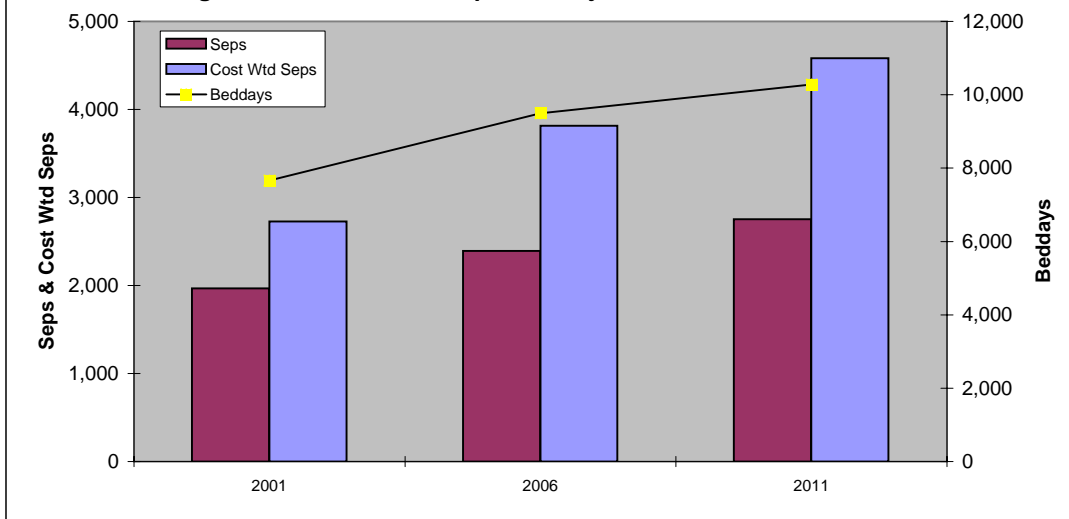


Table 30.4 SWSAHS Hospitals' Projected Activity to 2006 and 2011: HAEMATOLOGY**

	2001	2006	2011
Seps	1,969	2,391	2,752
Day only Seps	1,041	1,178	1,320
Cost Wtd Seps	2,728	3,815	4,583
Average Cost Wtd Sep	1.39	1.60	1.67
Beddays	7,661	9,495	10,281
Average LOS	3.9	4.0	3.7
Average LOS excl day only	7.1	6.9	6.3
Beds at 85% occupancy	24.7	30.6	33.1
Beds at 95% occupancy	22.1	27.4	29.6

Figure 30.2 SWSAHS Hospitals' Projections: HAEMATOLOGY **



Acute Inpatients Age 16+ Yrs
NB Cost wtd seps are undiscounted

* Data source: NSW Health *Flowinfo V 5.1*
** Data source: NSW Health *APPI 2003*

30.4

Haematology Services